



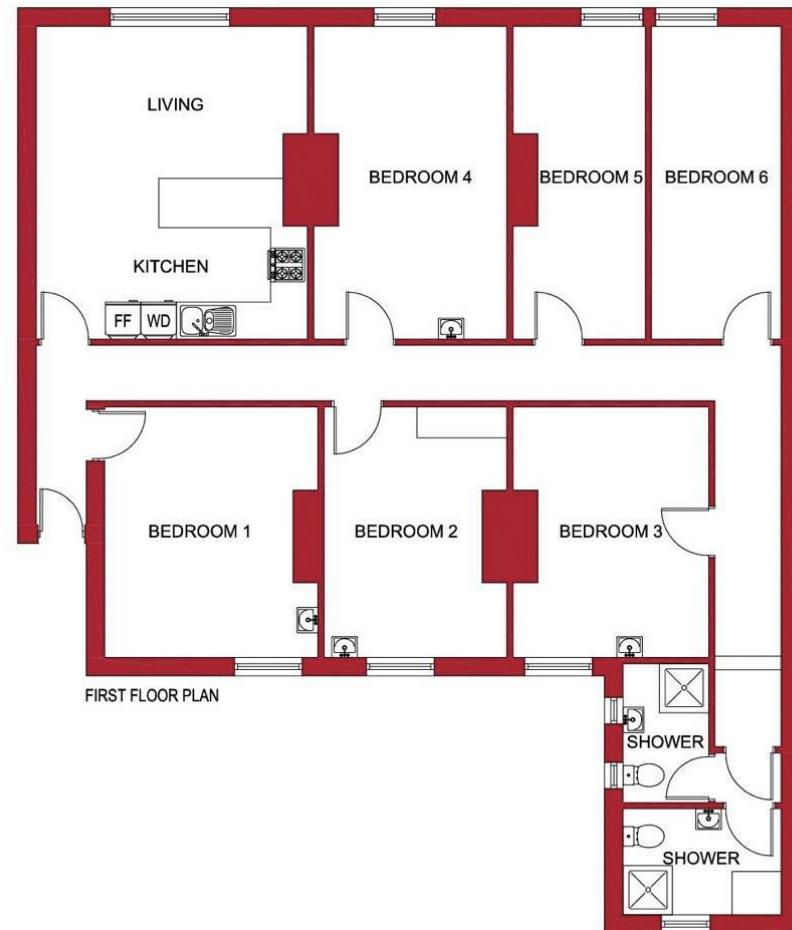
Viewings

Viewings by arrangement only.
Call 0114 2666300 to make an appointment.

Vendors Comments

Add text here

Energy Efficiency Rating		Current	Potential
Very energy efficient - lower running costs			
(92 plus) A			
(81-91) B			
(69-80) C		71	77
(55-68) D			
(39-54) E			
(21-38) F			
(1-20) G			
Not energy efficient - higher running costs			
England & Wales		EU Directive 2002/91/EC	



JC SALES & LETTINGS

Tel: 0114 483 0038
E-mail: sales@jc-salesandlettings.com
Website: www.jc-salesandlettings.com



Room 2, 294a Ecclesall Road, Sheffield, S11 8PE

£502 Per month

- £125 per week to include all bills
- Large double room available
- Two bathrooms
- Close to an abundance of local amenities
- EPC Grade C
- STUDENT property available from 1st July 2025
- Shared six bedroom property
- Excellent location on Ecclesall Road
- Ideal for students studying at Sheffield Hallam University

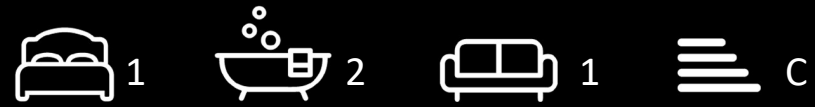
Room 2, 294a Ecclesall Road, Sheffield S11 8PE

*** STUDENT *** £125 PER WEEK, TO INCLUDE ALL BILLS ***

LARGE DOUBLE BEDROOM in a SHARED, six bedroom property available to STUDENTS, with TWO BATHROOMS.

A VERY WELL LOCATED, six bedroom APARTMENT close to an abundance of local amenities and situated in the HIGHLY SOUGHT AFTER location off ECCLESALL ROAD.

In brief the accommodation comprises: open plan lounge / kitchen, large double bedroom and two bathrooms. An early viewing is highly recommended to avoid disappointment! EPC Grade C.



Council Tax Band: A

